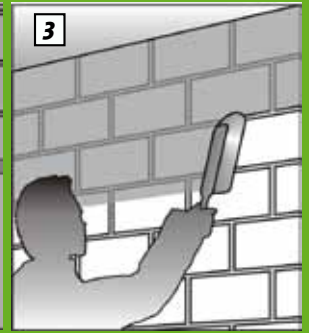
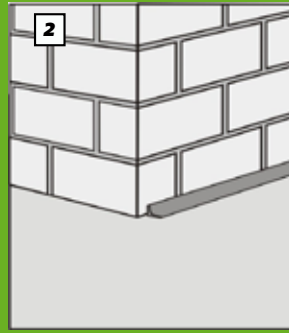
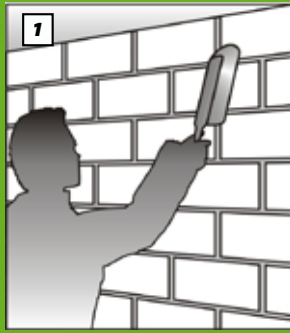


INSTALLATION GUIDELINE
KÖSTER KSK-MEMBRANES



1 Substrate preparation

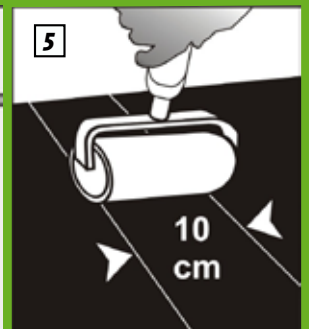
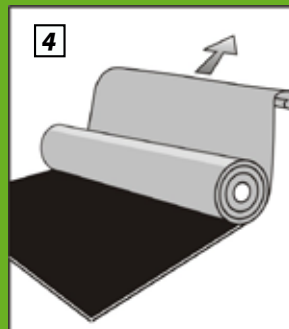
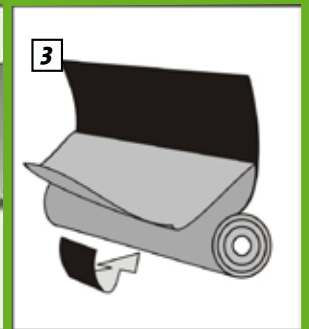
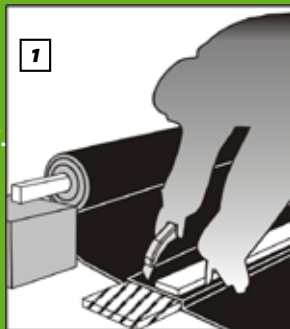
1. Remove all loose particles. The substrate must be clean, sound, solid, free of oil, grease, and all bond inhibiting substances.
2. Install fillets in the wall / floor junction with KÖSTER Repair Mortar. Round off edges. Close voids and holes using KÖSTER Repair Mortar.
3. Prime the substrate. In temperatures above +5 °C, prime all substrates with undiluted KÖSTER KBE Liquid Film (consumption: 0.25 kg/ m²).



2 Application of the membrane

2.1 General handling of the membrane

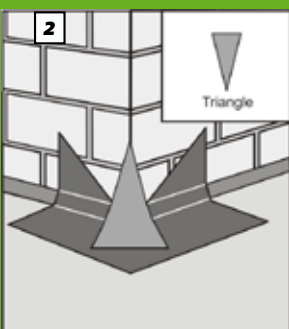
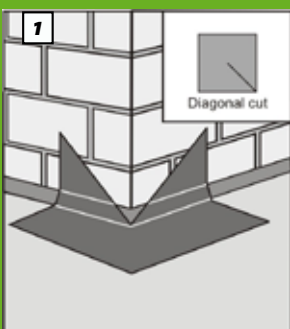
1. Cut the KÖSTER KSK Membrane using a sharp knife. Cut on top of a wooden board and use a straight edge as cutting support. Wet the blade repeatedly to avoid soiling the blade with bitumen.
2. Pull the backing paper off on a length of approx. 20 cm.
3. Pull the backing paper through underneath the roll and bond the exposed adhesive side of the membrane to the substrate.
4. Continue to pull off the backing paper evenly when progressing and press the KÖSTER KSK Membrane to the substrate without folds and without enclosed air.
5. Membranes are placed so that the edges overlap by approx. 10 cm. Use a roller to firmly press the membranes onto the substrate. On overlapping areas, take special care to ensure that the membranes have been pressed together well.



2.2 Details of outside and inside corners

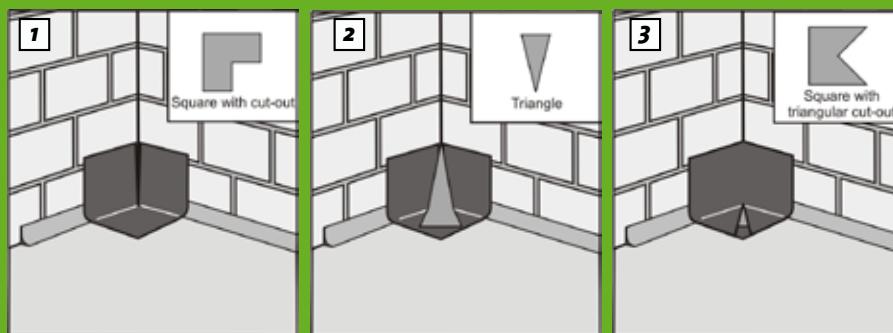
2.2.1 Outside corners

1. First install a diagonally cut piece of membrane to the substrate in the corner.
2. Then install a triangular shaped piece of membrane onto the corner with the tip pointing upwards.
3. Finally, apply a piece of membrane cut on the side as shown.

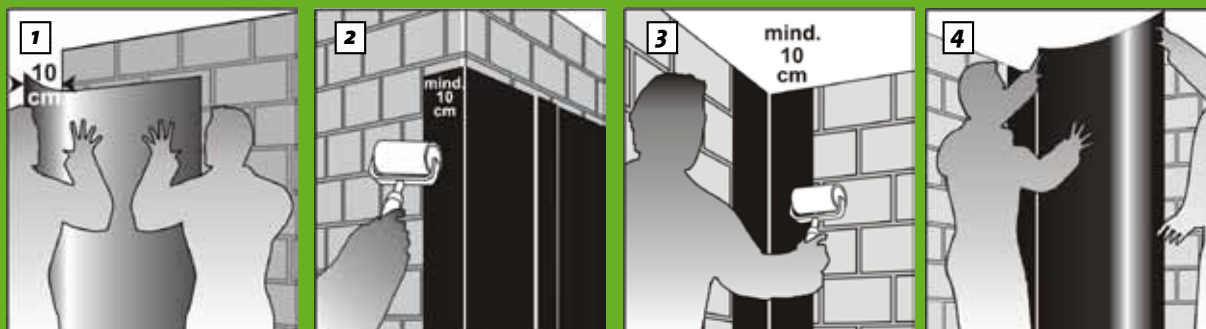


2.2.2 Inside corners

1. First, install a piece of membrane with a square shaped cut-out to the substrate in the corner.
2. Then install a triangular shaped piece of membrane onto the corner with the tip pointing upwards.
3. Finally, apply a piece of membrane with a triangular shaped cut out as shown.



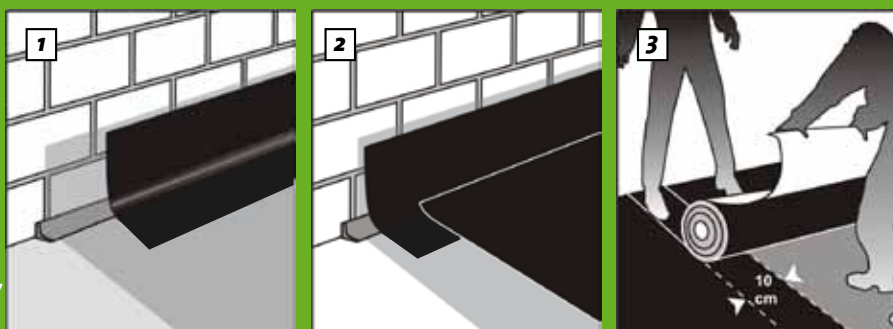
2.3 Waterproofing wall areas



1. Remove the backing paper on a length of approx. 20 cm, align the KÖSTER KSK Membrane, and apply it to the substrate.
2. Apply the membrane over corners to the substrate on both sides by at least 10cm.
3. On inside corners, apply a strip of membrane at least 20 cm wide into the corner area.
4. Overlap the KÖSTER KSK Membrane by at least 10 cm onto the piece of membrane applied in the corner.

2.4 Waterproofing inside floors

1. After the fillet has been installed, reinforce the wall/floor junction by applying an approx. 20 cm wide strip of membrane over the fillet.
2. Apply the KÖSTER KSK Membrane onto the floor, overlapping onto the previously installed strip of membrane.
3. When applying the membrane overlap individual sheets by at least 10 cm.

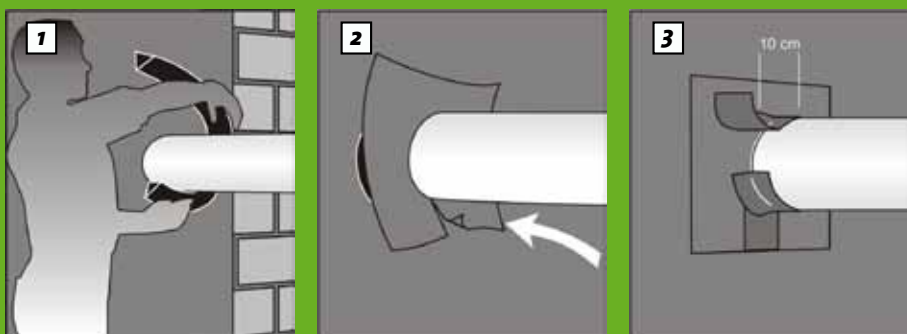


Recommended SUBSEQUENT LAYERS:

1 Layer of PE-Foil and 5 cm protective screed.

NOTE: Horizontal areas which were waterproofed with KÖSTER KSK Membranes must be protected from sunlight and they must be covered and pressed on within 2 weeks after their application.

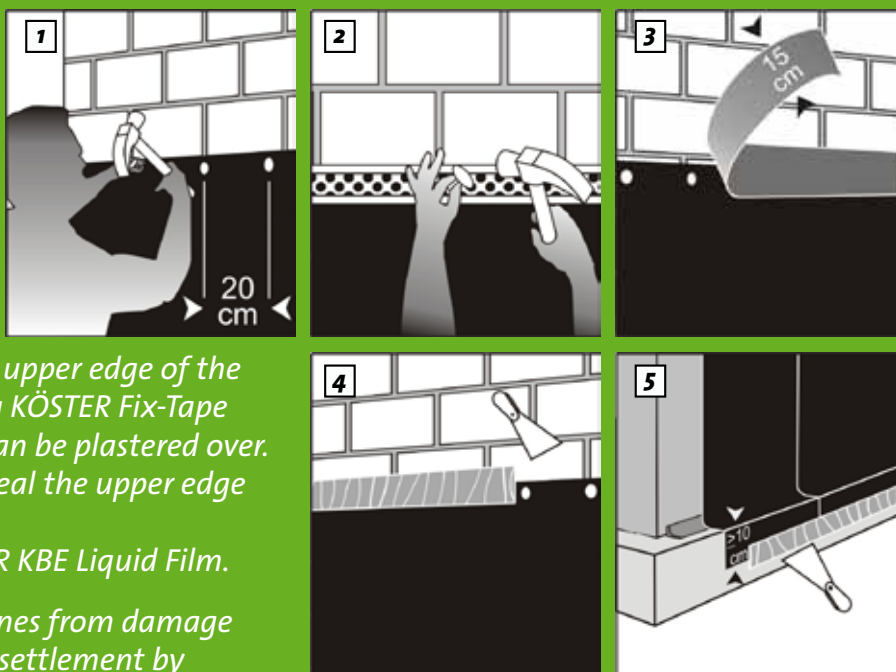
2.5 Waterproofing pipe penetrations



1. Install a fillet with KÖSTER Triangular Ribbon, KÖSTER BS 1, or KÖSTER Deuxan around the pipe penetration.
2. Cut a hole with the diameter 2 cm smaller than the pipe into a piece of the KÖSTER KSK Membrane and bond it to the substrate, ensuring that no air is enclosed under the membrane.
3. Use a 10 cm wide strip of the KÖSTER KSK Membrane to cover the end of the membrane around the pipe as well as the cut in the membrane. Make sure to overlap at least 1 cm onto the membrane. Use KÖSTER BS1 Bitumen Paste or KÖSTER KBE Liquid film to seal the ends of the membrane around the pipe and all other spots which may require additional sealing.

3 Methods for fixing and sealing the upper and lower edges

1. The upper edge of the membrane is mechanically fixed into position. Use pan head nails to fix the membrane into position.
2. Alternatively it is possible to use pre-perforated metal profiles for fixing the upper edge of the KÖSTER KSK Membranes into position.
3. Another method for sealing the upper edge of the KÖSTER KSK Membranes is using KÖSTER Fix-Tape Fleece. KÖSTER Fix-Tape Fleece can be plastered over.
4. Use KÖSTER KBE Liquid Film to seal the upper edge including the pan head nails.
5. Seal the lower edge with KÖSTER KBE Liquid Film.



NOTE: Protect KÖSTER KSK Membranes from damage due to backfilling or due to ground settlement by installing KÖSTER Protection and Drainage Sheet 3-400.

The information contained in this brochure are non-binding and do not release the applicator from his responsibility for the correct application under consideration of the specific conditions of the construction site and for the final results of the construction process. The valid standards for testing and installation, acknowledged rules of technology as well as our technical guidelines have to be adhered to at all times.